

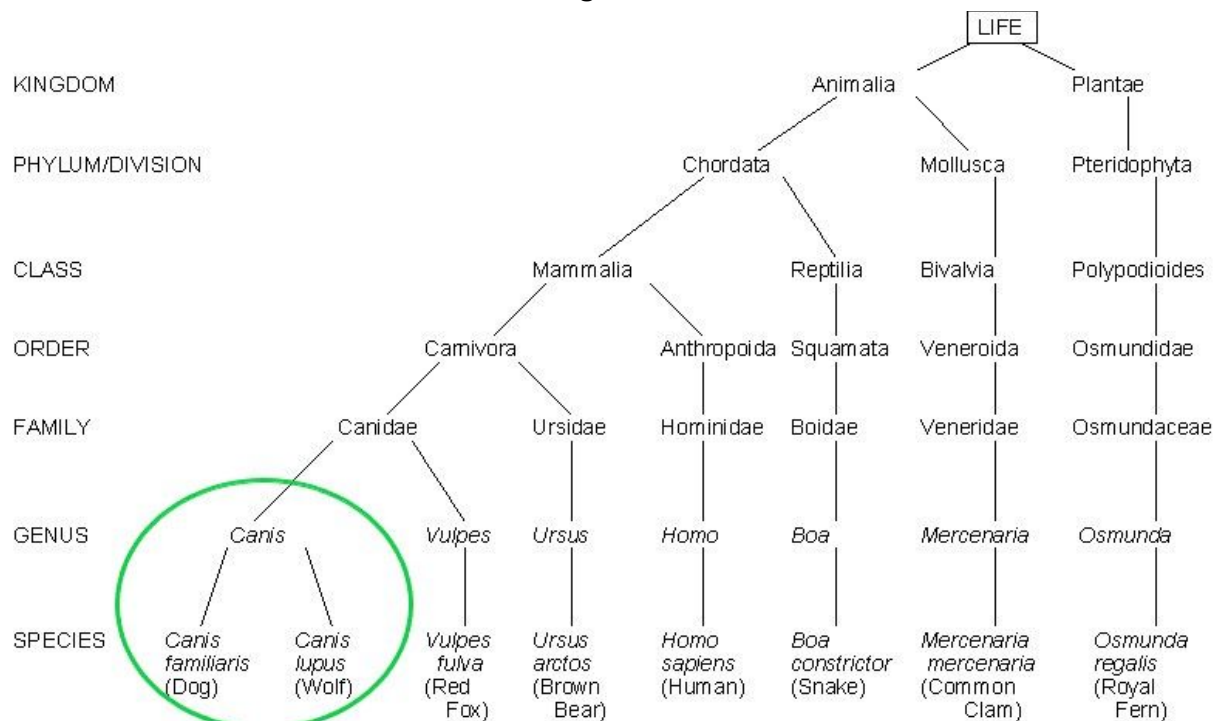


**Part 1 of our Debunking Dog Myths Series:**  
**Please stop modeling a dog's lifestyle after the modern wolf....it is scientifically inaccurate and really just annoying**

**TAXONOMY**

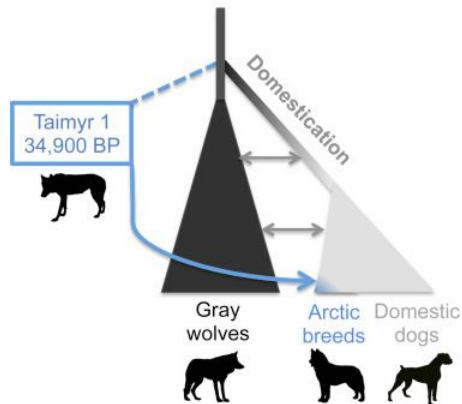
Taxonomy (in this case) is the study of classifying organisms based on their shared characteristics and their ancestors.

**For dogs and wolves**



itc.gsw.edu

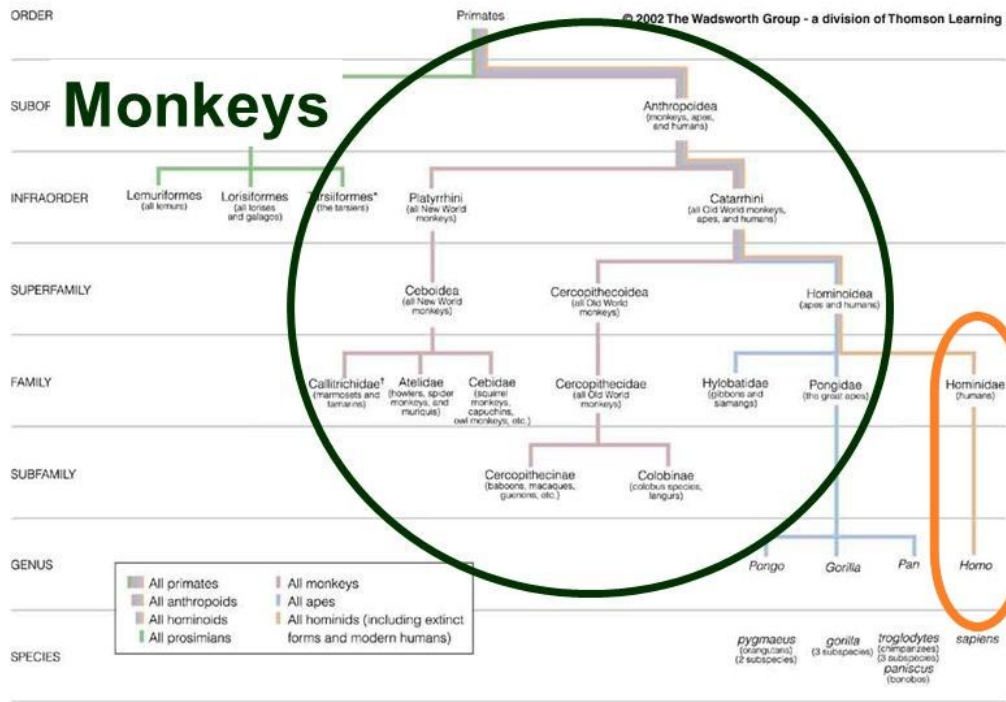
What do you notice? **Dogs are not descendents of modern day wolves.** There is not a direct lineage.



Skoglund, Pontus, et. al. "Ancient Wolf Genome Reveals an Early Divergence of Domestic Dog Ancestors and Admixture into High-Latitude Breeds". Current Biology, Volume 25, Issue 11, 1 June 2015, Pages 1515-1519

They simply share an ancestor, much like we do with primates.

**For humans and non-human primates**



Here we are, humans

**Primate taxonomic classification**

So...what was the common ancestor between dogs and wolves actually like? It is hard to know for sure, but as more fossils and evidence are discovered we are learning more. Read this article from Live Science to learn more

<https://www.livescience.com/50928-wolf-genome-dog-ancient-ancestor.html>

For more information visit:

Retrieved [May, Fifth, 2019], from the Integrated Taxonomic Information System (ITIS) (<http://www.itis.gov>). White House Subcommittee on Biodiversity and Ecosystem Dynamics *Interagency Taxonomic Information System*